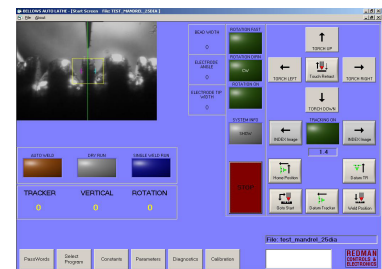
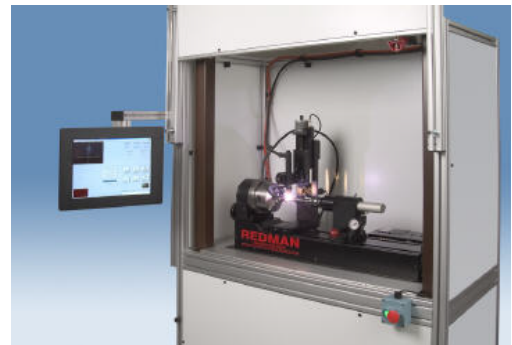


## Metal Bellows Tracker MBT330



A robust and highly accurate weld lathe and video tracker specially designed for precise fully automatic welding of edge welded diaphragm bellows

- Highly magnified image displaying live video of the electrode, weld pool and work piece.
  - Video image analysis for 2 axis horizontal & vertical dynamic servo tracking during the welding.
  - Measures and data logs the convolution bead width while welding.
  - Graphical display of weld, amps, arc volts, tracking position & bead width.
  - Measures the Tig tungsten electrode tip and angle.
  - Appropriate for Tig, Plasma and Laser weld processes.
  - User programmable weld sequence, amperage, pulsing, rotation speed, convolutions and spacers.
  - Robust LCD touch screen for user-friendly control of weld parameters, data entry and weld image.
  - Easily configured to suit a bellows type or a production method.
  - Many variations and options available
- 
- Pneumatic tailstock with quick clamp
  - Bellows convolution 1 to 20 thou
  - Bellows diameter 0.5 to 12 inches
  - Position accuracy .25 thou
  - Lathe bed 40" long, 12 " wide
  - Rotation speeds 0.1-50 rpm
  - 0.1 - 50 Amps weld current
  - Input 110 - 240 V, 50 - 60 Hz

REDMAN CONTROLS & ELECTRONICS LTD

OYO Business Park, Unit J, Hithercroft Rd, Wallingford, Oxfordshire, OX10 9FE, UK  
Tel: +44 (0) 1491 833 465, Fax: +44 (0) 1491 834 465, [www.redmancontrols.com](http://www.redmancontrols.com), [sales@redmancontrols.com](mailto:sales@redmancontrols.com)